

Bourdon Tube Pressure Gauges

Bayonet Ring Case Stainless Steel 

With Magnetic Contact



Cl. 1.6

Model **RSCh 63**

Application

For pressure measurement of fluid and gaseous media (compatible to the wetted parts) which are not highly viscous and do not tend to polymerize, especially where a sealed case, chemical resistance and high safety standards are required, and additionally making or breaking electrical circuits in response to a limit position of the pointer of the instrument.

Electrical Data

For detailed information about use and operation of magnetic limit-switch contact assemblies please note our **general information leaflet 9000**.

Switching Function

For further information about the available make/break operations see **data sheet 9100** for mechanical limit-switch contact assemblies.

Standard Configuration

The standard configuration of the pressure gauge complies with model RSCh 63 (without liquid filling) as described in data sheet **1610** and **model overview 1000** as far as there are no deviating descriptions below.


Window

Laminated safety glass,
except case configurations Fr, rFr: Polycarbonate

Safety Features

Safety case S3 according to EN837-1:

- Solid front between measuring system and dial
 - Full blow-out safety back
- Should the Bourdon tube rupture, the entire case back separates, allowing full relief.

The instruments are tested according to EN 837-1 and marked with  **EN837-1**.

Minimum Pressure Range

Every pressure gauge needs a sufficient amount of torque to operate the limit-switch contact assemblies with minimized error. For this reason the following minimum pressure ranges are to consider:

1 x Magnetic contact	0-2.5 bar
1 x Change over contact	0-4 bar
2 x Magnetic contacts (accuracy class 2.5)	0-4 bar

Adjustment

- Accessible after dismounting the bayonet ring including window (adjustment by hand)
- Case configurations Fr, rFr: Adjustment from outside (through the window), removable key

Adjustment Range

Between minimum 2 % and maximum 98 % of the full scale value

Electrical Connection

1 m (3 feet) connection cable and screwed cable gland M12 x 1.5 at the bottom of the right side of the case (approx. at 5 o'clock), compare drawings overleaf

CE-Marking

CE-marking according to EMC-Directive, but limited to max.5 switchings per minute



Special Options

● Electrical Connection:

- Plug connector acc. to DIN EN 175301-803 form C on the left side of the case at 9 o'clock (dimensional drawings upon request)
- Cable socket or other electrical connection on the left side of the case (at 9 o'clock) upon request
- Other positions of the electrical connection upon request

● Adjustment

- For case configurations bottom connection, r and Rh: Adjustment from outside, removable key, polycarbonate window (standard for Fr, rFr)
- Adjustment device with non-removable key upon request

How to Order:

Please add the following ordering information to the regular ordering code of the pressure gauge (compare data sheet 1610):

- Code letter for limit-switch contact assembly **M**
- Code number for switching function: e.g. **1, 2, 3, 11, 12, 21, 22** (compare data sheet 9100)

If you state the required switching limits when ordering, the adjustment can be set accordingly at our factory.

Special options: see above

Examples:

- RSCh 63-3, G ¼ B, 0-6 bar, M 2, switching limit: 4 bar
- RSCh 63-3, Fr, ¼" NPT, 0-10 bar, M11, with plug connector EN 175301-803



ARMATURENBAU GmbH

Manometerstraße 5 • D-46487 Wesel - Ginderich
Phone: (0 28 03) 91 30-0 • Fax: (0 28 03) 10 35
armaturenbau.com • mail@armaturenbau.com



Subsidiary Company and Sales East Germany and Eastern Europe

MANOTHERM Beierfeld GmbH 1619.1

Am Gewerbepark 9 • D-08344 Grünhain-Beierfeld
Phone: (0 37 74) 58-0 • Fax: (0 37 74) 58-545
manotherm.com • mail@manotherm.com

9/06

Case Configurations, Electrical Connection, Dimensional Data, and Weight

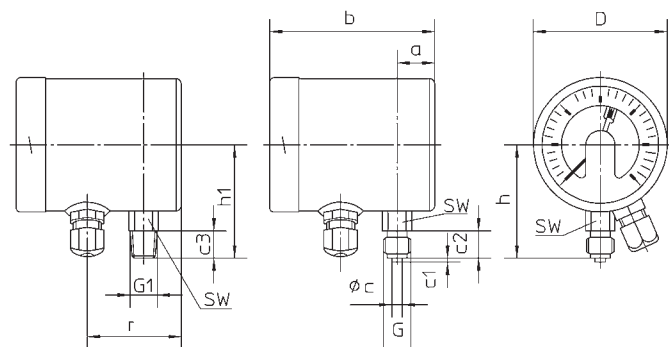
Different dimensions in comparison to data sheet 1610: Dimensions b, b1, g and g1 (front-to-back sizes) , compare tables below.

Other positions of the screwed cable gland as the one shown in the

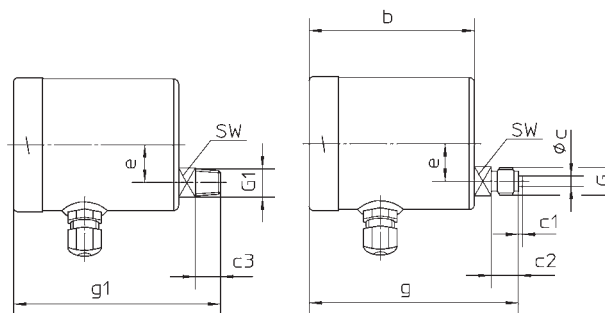
following dimensional drawings are available only upon request and at extra charges.

Dimensional drawings for versions with plug connector available upon request.

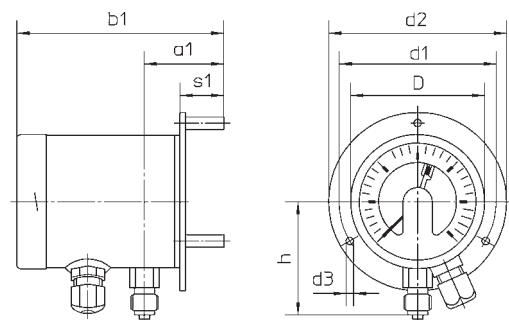
Bottom connection
(without code letter)



Lower back connection,
code letter: **r**

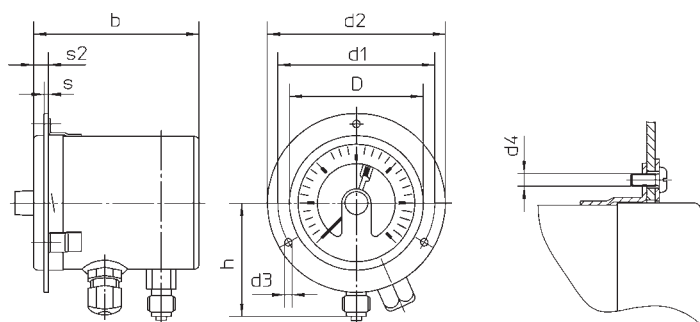


Bottom connection,
rear mounting flange,
code letters: **Rh**



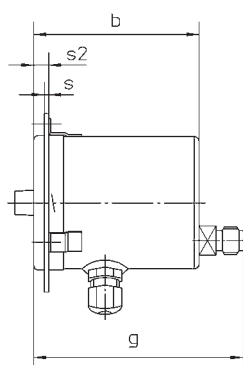
Case configuration Rh includes 3 separate mounting spacers.

Bottom connection,
front mounting flange,
code letters: **Fr**



Case configurations Fr, rFr = 3 mounting brackets welded to the case and a separate cover front flange

Lower back connection,
front mounting flange,
code letters: **rFr**



Dimensions (mm / inches) and Weight (kg / lb)

Nom. case size NCS	a	a1	b	b1	c	c1	c2	c3	D	d1	d2	d3	d4	e
63 2½"	18 .71	38 1.50	79 3.11	99 3.90	5 .2	2 .08	13 .51	13 .51	64 2.52	75 2.95	85 3.35	3.6 .14	M3	18 .71

G	G1	g±1	g1±1	h±1	h1±1	r	s	s1	s2	SW	Weight (approx.)
G ¼ B ¼" BSP	¼" NPT	99 3.90	99 3.90	54 2.13	54 2.13	45 1.77	1 .04	21 .83	7 .28	14 .55	.29 .64

The information in this leaflet is given in good faith, but we reserve the right to make changes without notice.