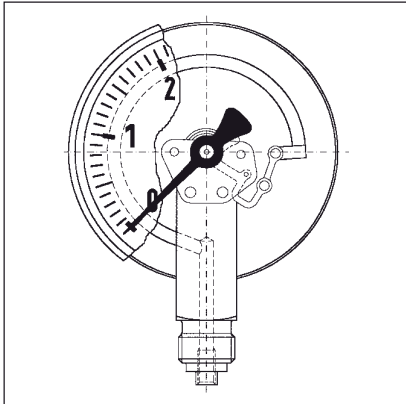


Standard Bourdon tube pressure gauges EN 837-1



Application

For gaseous and liquid media which are not highly viscous, do not crystallize and do not attack copper alloys.

! When measuring gas or vapour, the instruments must be used in accordance with the safety recommendations of EN 837-2 (see appendix).

Type

D 2/D 3

Nominal size

40 - 50 - 63

Accuracy class (EN 837-1/6)

1.6

Ranges (EN 837-1/5)

-1/0 to -1/+15 bar

0/0.6 to 0/400 bar

Application area

Static load:

$\frac{3}{4}$ x full scale value

Dynamic load:

$\frac{2}{3}$ x full scale value

Short term:

full scale value

Operating temperature range

Medium: $T_{max} = +60\text{ }^{\circ}\text{C}$

Ambient: $T_{min} = -20\text{ }^{\circ}\text{C}$

$T_{max} = +60\text{ }^{\circ}\text{C}$

Temperature performance

Indication error when the temperature of the measuring element deviates from 20 °C:

rising temp. approx. $\pm 0,4\text{ } \%/10\text{ K}$

falling temp. approx. $\pm 0,4\text{ } \%/10\text{ K}$
percentage of full scale value

Protection

IP 32 (EN 60 529)

Standard version

Connection

Brass, bottom or centre back

NG 40 G $\frac{1}{8}$ B – spanner size 12

NG 50-63 G $\frac{1}{4}$ B – spanner size 14
(EN 837-1/7.3)

Measuring element

Bourdon tube element, copper alloy

$\leq 60\text{ bar}$ „C“ type bourdon tube

$> 60\text{ bar}$ helical tube

Movement

Brass

Dial

Plastic, white

Dial marking black

Pointer

Plastic, black

Housing

D 2 – black sheet steel

D 3 – stainless steel 304

Front glass

Clip-in plastic

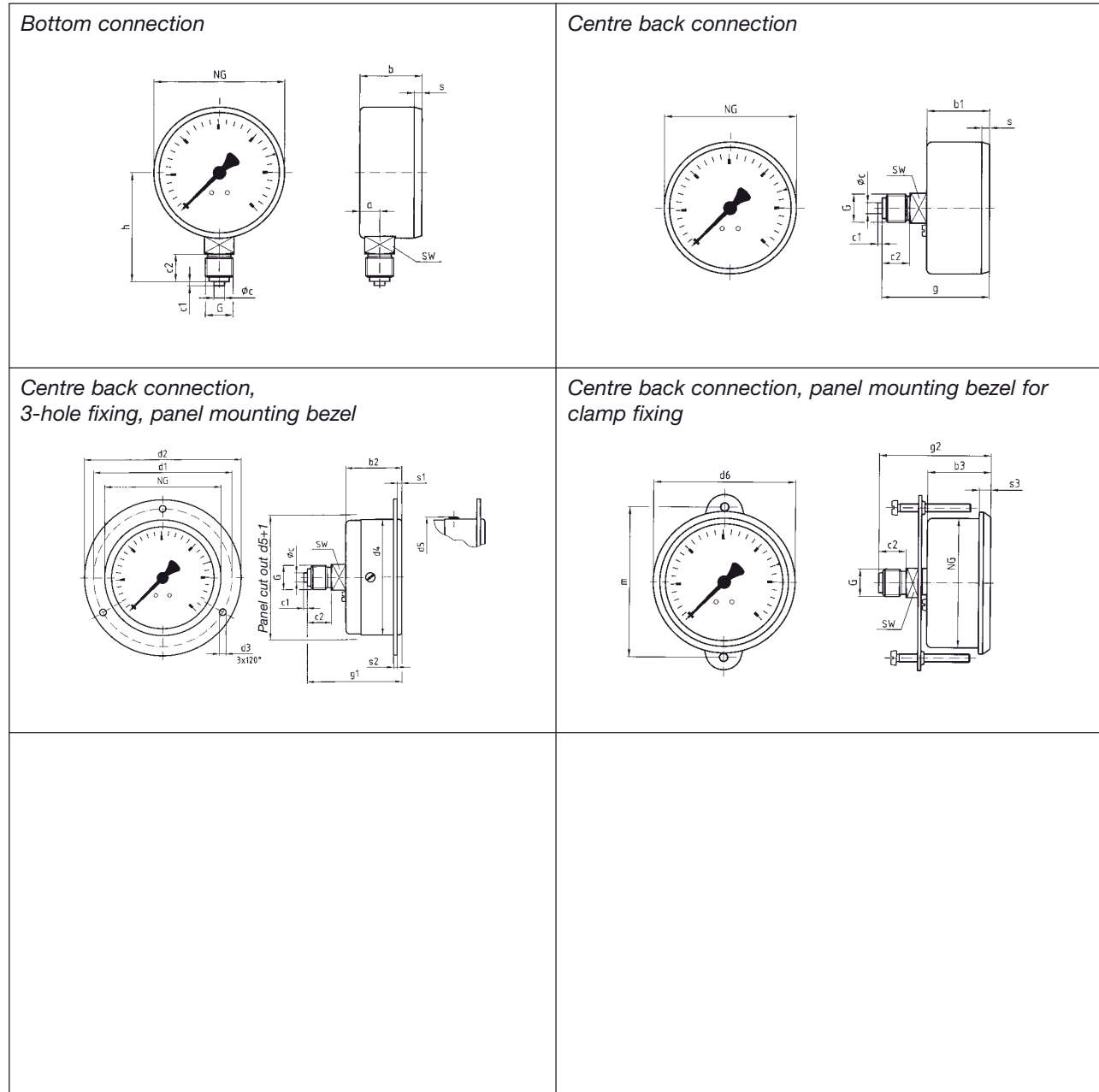
Options

- Panel mounting bezel for clamp fixing
- 3-hole fixing panel mounting bezel
- Damping screw
- Reference pointer

Standard Bourdon tube pressure gauges

Type D 2/D 3 – NG 40/50/63

Housing types and dimensions



Dimensions (mm)

Nominal size (NG)	a	b	b1	b2	b3	ϕ_c	c1	c2	d1	d2	d3	d4	d5	d6	g	g1	g2	G	h	m
40	8.5	23.5	25	26	28	4	2	10	51	61	3.6	41	45	44	41.5	42.5	46.6	G1/8B	36	50
50	10.5	26	26	27.5	30.3	5	2	13	60	71	3.6	50	54	54	47	49	51.3	G1/4B	45	58
63	9.5	29.4	29.4	30.3	30.3	5	2	13	75	85	3.6	63	66.5	67.8	50.4	51.3	53.3	G1/4B	51.5	72
Nominal size (NG)	s	s1	s2	s3	SW															
40	3	2.5	2	5.2	12															
50	3.8	2.5	2	5.4	14															
63	3.7	2.5	2	5.6	14															