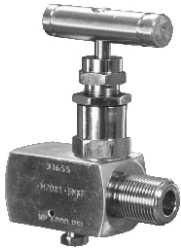


Fitting accessories

Valves



Needle valve VM-1

Material 316ss
Medium temperature, working pressure – according to the graph on page 53
Ordering code:

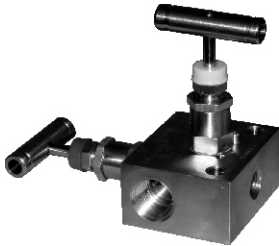
- Valve VM-1/M** (input M20×1.5 M, output M20×1.5 F, Teflon packing)
- Valve VM-1/G** (input G1/2" M, output G1/2" F, Teflon packing)
- Valve VM-1/graphite** (input M20×1.5 M, output M20×1.5 F, Graphite packing)
- Valve VM-1 oxygen** (valve designed for contact with oxygen; input M20×1.5 M, output M20×1.5 F, Teflon packing)



Needle valve VM-1-R/R

Material 316ss
Medium temperature, working pressure – according to the graph on page 53
Input 1/2NPT F, output 1/2NPT F, Graphite packing, no vent port
Ordering code:

- Valve VM-1-R/R/** _____
- 1 – Set of weldable stainless steel connectors (316ss)
 - 2 – Set of weldable steel connectors (K11562)
 - 3 – Set of connectors with Ø12 clamping ring
 - 4 – Set of connectors with Ø14 clamping ring

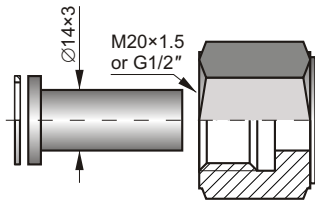


2-Valve Manifold VM-2

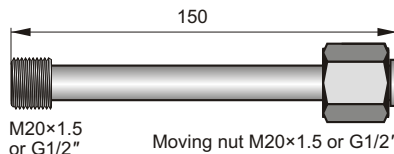
Material 316ss
Medium temperature, working pressure – according to the graph on page 53
Input 1/2NPT F, output 1/2NPT F, Teflon packing, vent port 1/4 NPT F
Ordering code:

Valve VM-2-R/R

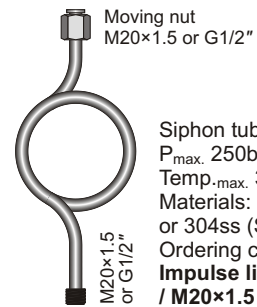
Fitting sockets, transmission tubes



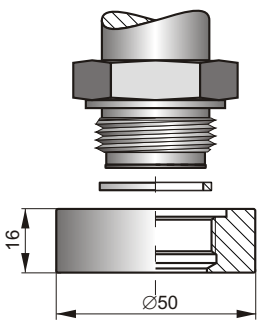
Connector to weld
Materials: 15HM – (SO) or 316ss (S)
Ordering code
RedSpaw – S or SO / M20×1.5 or G1/2"



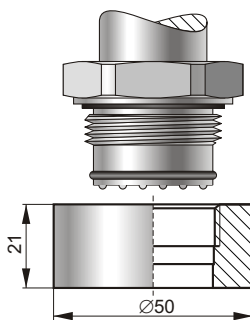
Impulse line
P_{max.} 100bar
Materials: R35 – (SO) or 304ss (S)
Ordering code
Impulse line – S or SO / M20×1.5 or G1/2"



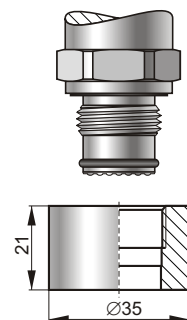
Siphon tube
P_{max.} 250bar
Temp._{max.} 300°C
Materials: R35 – (SO) or 304ss (S)
Ordering code
Impulse line – S or SO / M20×1.5 or G1/2"



Socket with M30×2 thread for fitting transmitters with a CM30×2 process connection
Material – 316Lss
Sealing – teflon
Ordering code **Socket CM30×2**

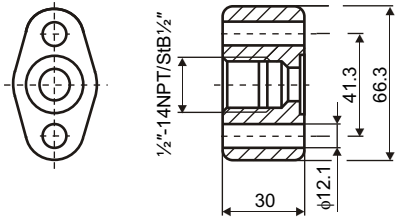
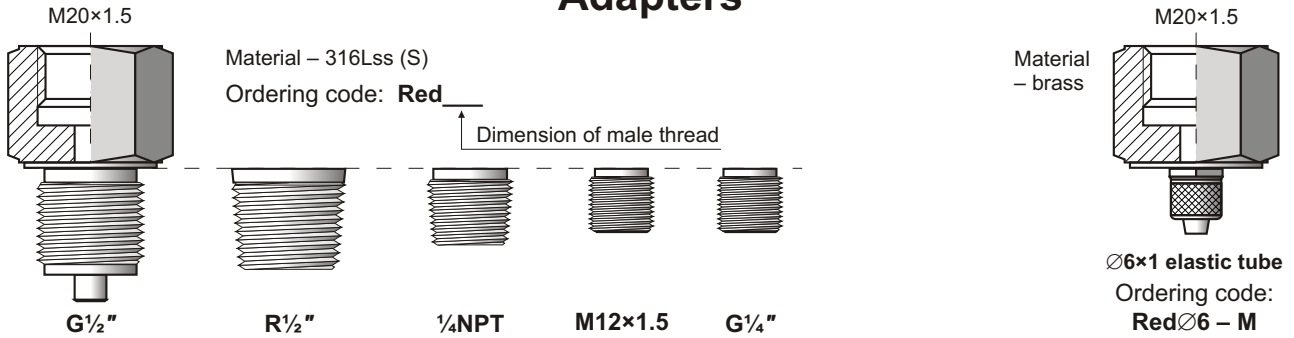


Socket with G1" thread for fitting transmitters with a CG1 process connection
Material – 316Lss
Sealing – teflon
Ordering code **Socket CG1**



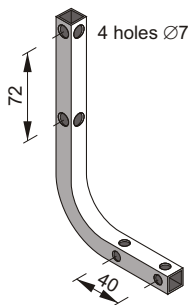
Socket with G1/2" thread for fitting transmitters with a CG1/2 process connection
Material – 316Lss
Sealing – teflon
Ordering code **Socket CG1/2**

Adapters

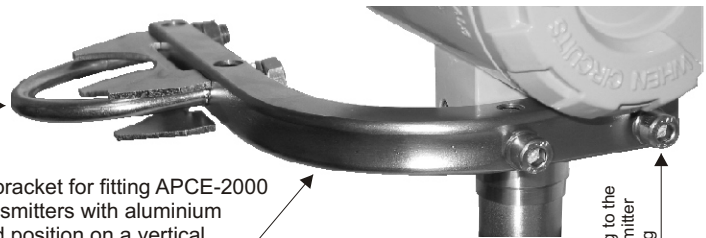


Adapter for differential pressure transmitters with C type process connection
Material – 316Lss
Ordering code: **Red-dP/1/2" NPT**

Mounting brackets



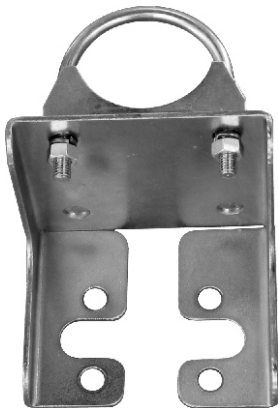
Clasp for fitting on a pipe



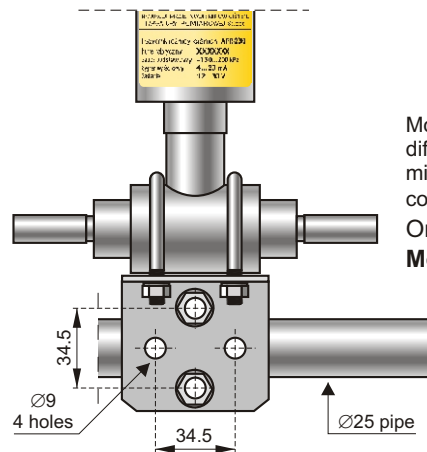
Universal mounting bracket for fitting APCE-2000 and APRE-2000 transmitters with aluminium casing in any desired position on a vertical or horizontal pipe (Ø30...Ø50)

Ordering code: **Mounting bracket AL**

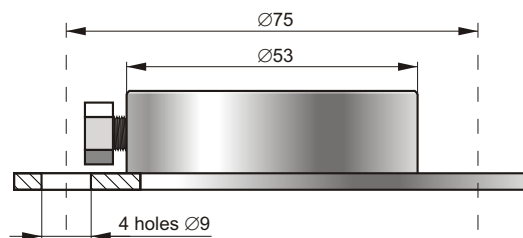
Fitting to the transmitter casing



Mounting bracket for fitting differential pressure transmitters with C type process connections on a 2" pipe or on a wall
Ordering code: **Mounting bracket C-2"**



Mounting bracket for fitting differential pressure transmitters with P type process connections on a Ø25 pipe.
Ordering code: **Mounting bracket Ø25**



Movable flange for fitting the PC-28P probe to horizontal tank covers (factory fitted, must therefore be specified when ordering the probe).
Material – 304ss
Specification: **Movable flange fastener**